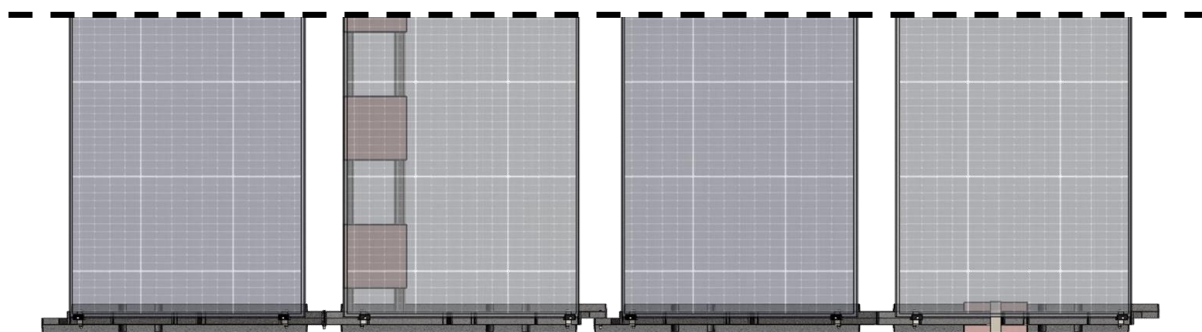
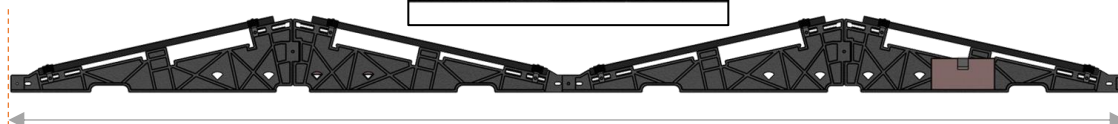
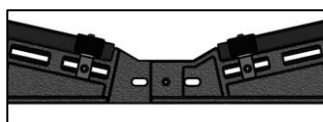


# INSTRUCTIONS DE MONTAGE

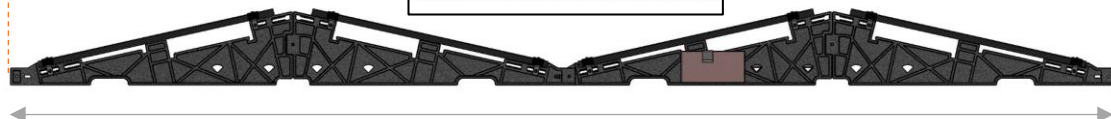
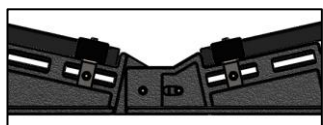
## SNAPSUN Système Est-Ouest



2 assemblages



Normal 5200mm

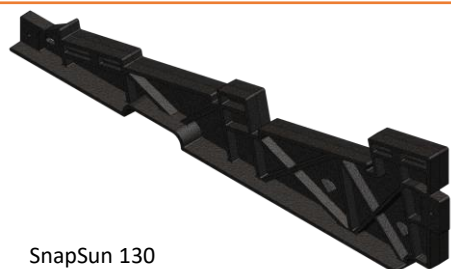


Court 5140mm

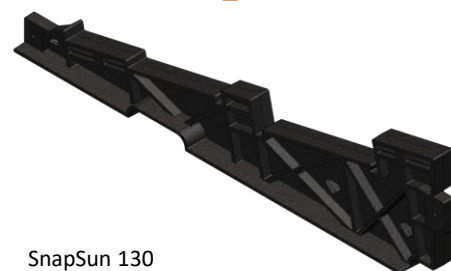
# INSTRUCTIONS DE MONTAGE

## SNAPSUN Système Est-Ouest

### BASE



SnapSun 130



SnapSun 130

### ACCESSOIRES

Boulon M8 Rondelle type LL 8 + Ecrou frein  
pour assemblage des pieds SnapSun



Vis M6

Support inox étrier



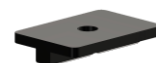
Support d'étrier

Boulon M8 Ecrou frein

Etrier latéral

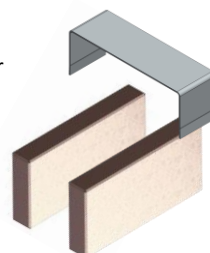


Etrier central



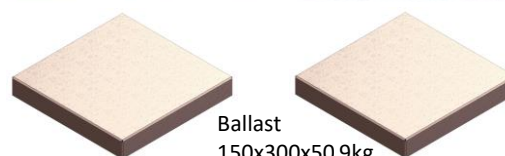
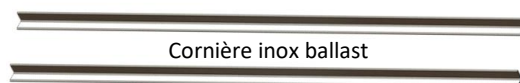
Support U inox pour  
ballast latérale

Ballast 150x300x50  
4,5kg



Système Ballast Latérale

Cornière inox ballast



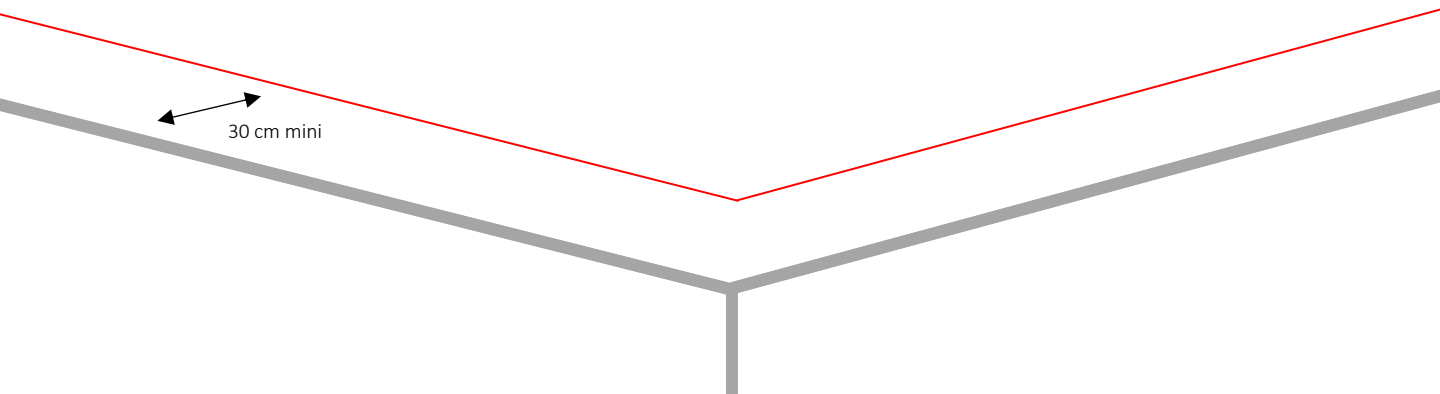
Ballast  
150x300x50 9kg

Système Ballast Horizontale

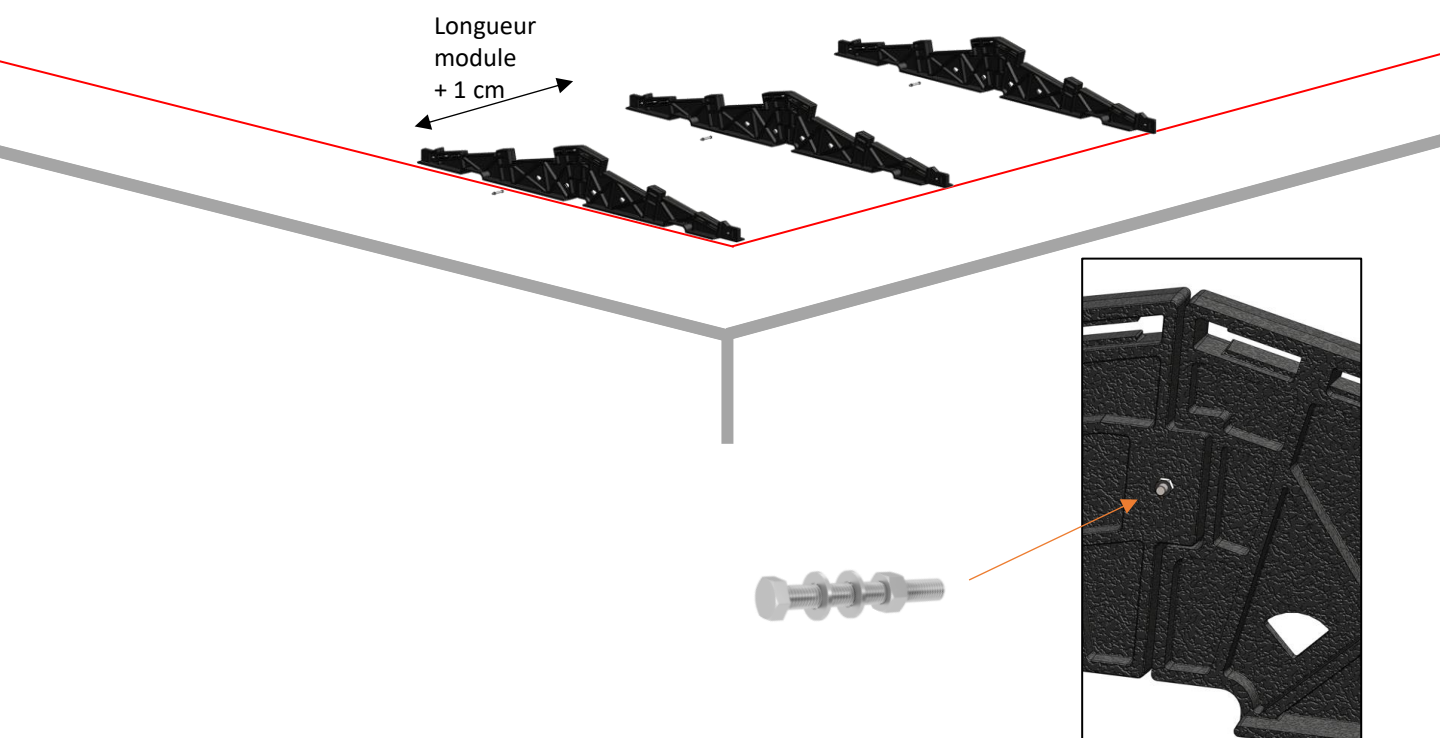
# INSTRUCTIONS DE MONTAGE

## SNAPSUN Système Est-Ouest

- Tracer l'emplacement de l'installation



- Connecter et placer les bases SnapSun

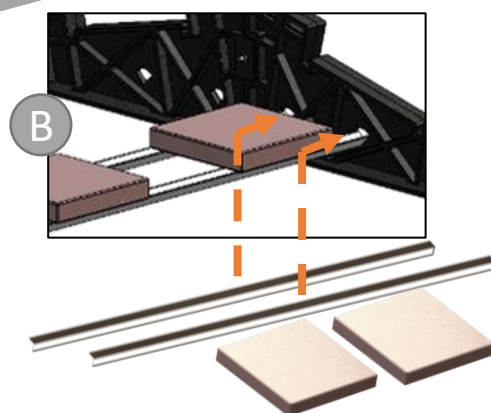
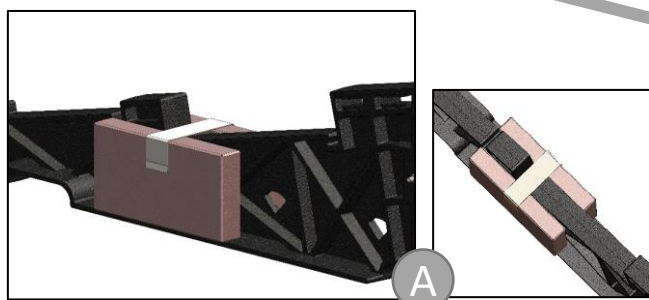
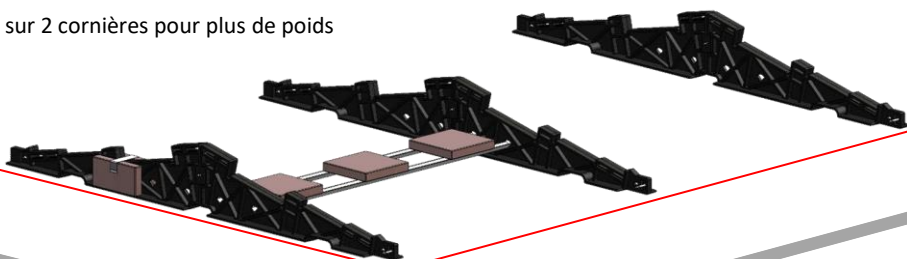


# INSTRUCTIONS DE MONTAGE

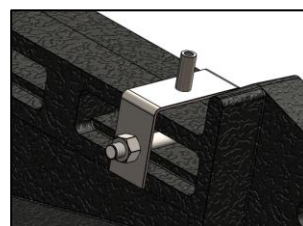
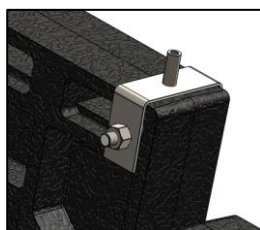
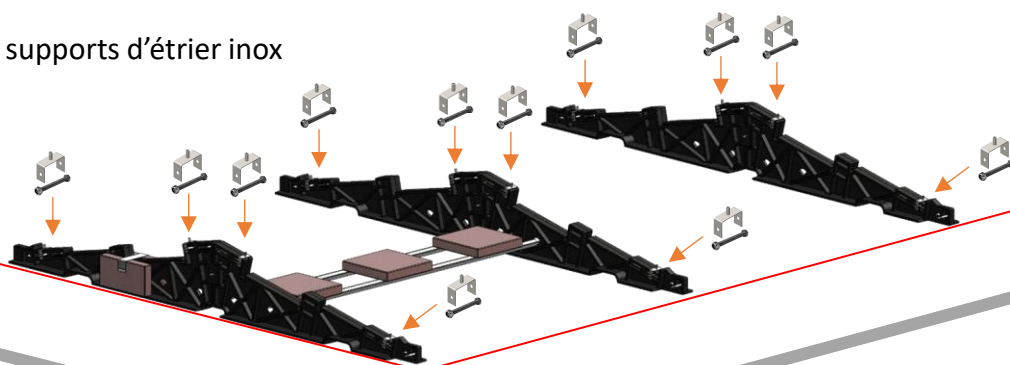
## SNAPSUN Système Est-Ouest

- Placer les Ballast selon le plan de lestage, 2 options possibles:

- A Ballast de coté avec un U inox
- B Ballast centrale sur 2 cornières pour plus de poids



- Monter les supports d'étrier inox



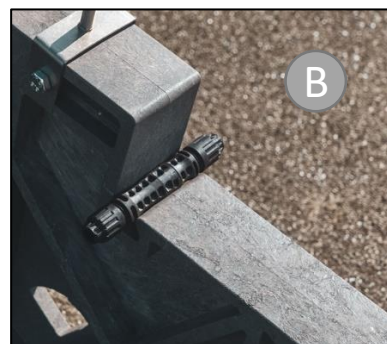
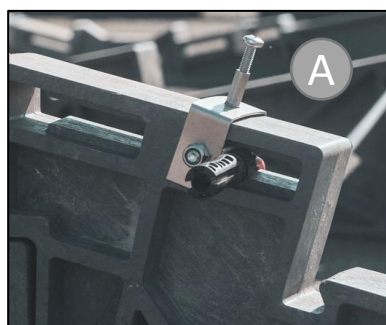
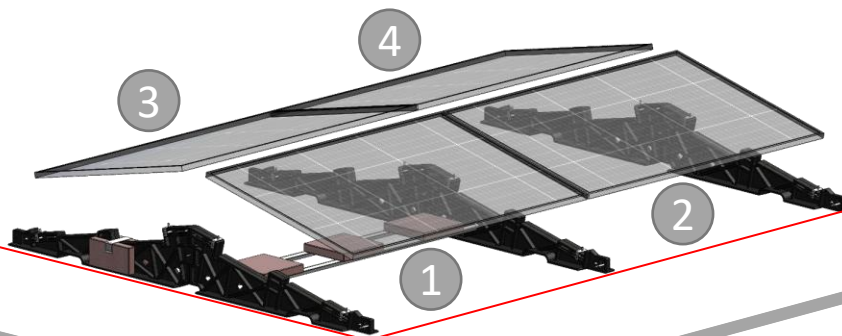
# INSTRUCTIONS DE MONTAGE

## SNAPSUN Système Est-Ouest

- Poser les panneaux de 1 à 4. Placer les connecteurs de panneaux en position:

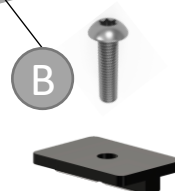
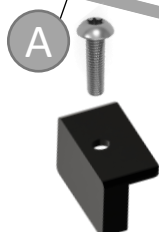
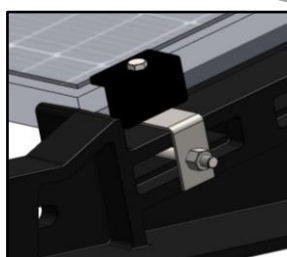
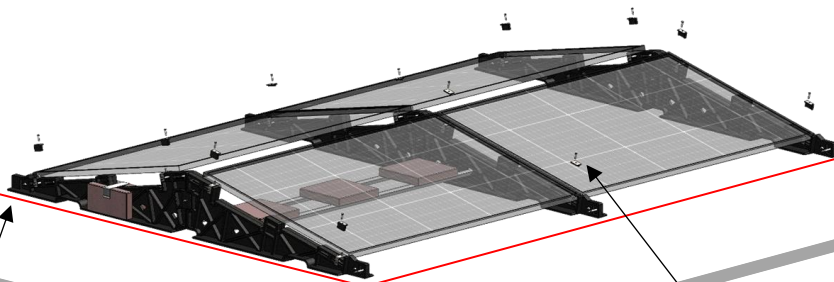
- **A** pour câble long
- **B** pour câble court

Ces positions éviteront tout contact des câbles avec le revêtement du toit



- Visser les étriers à un couple de 12 à 14 N.m

- **A** pour Latéraux
- **B** pour les Centraux

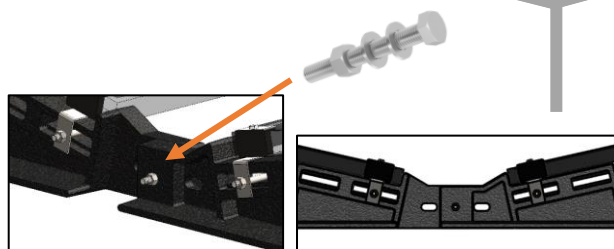
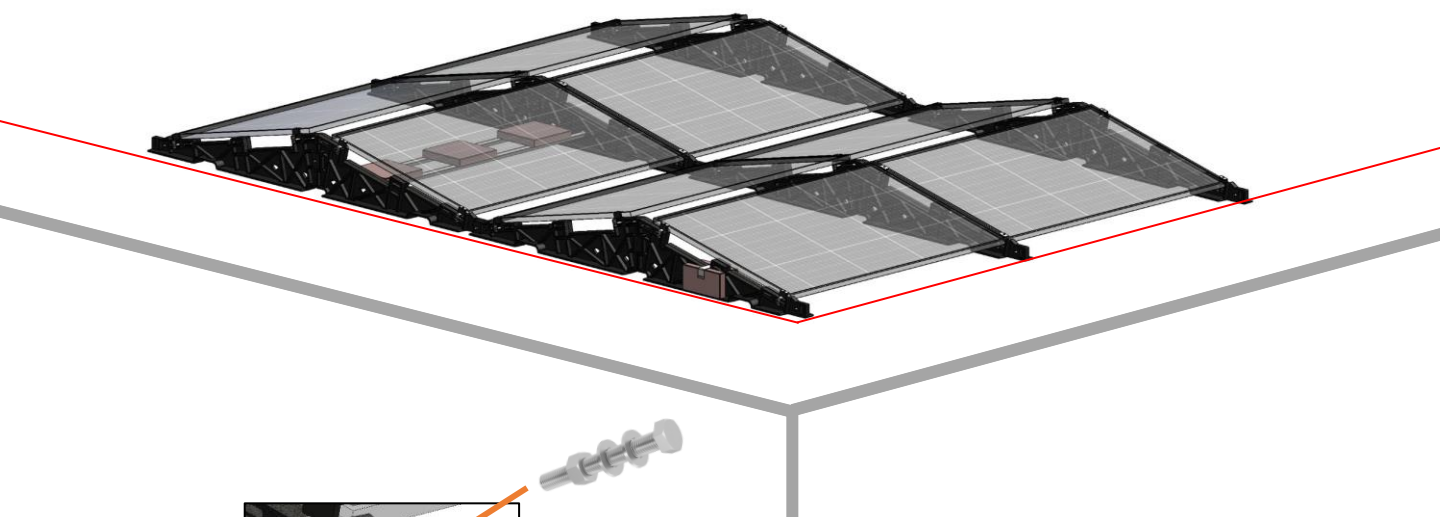




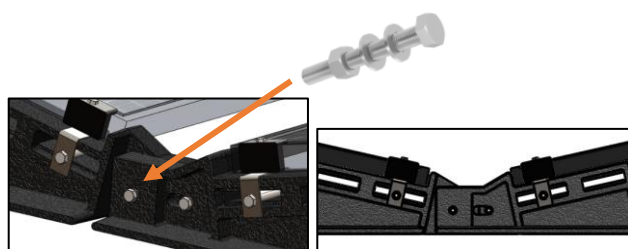
# INSTRUCTIONS DE MONTAGE

## SNAPSUN Système Est-Ouest

- Répétez l'opération pour des installations de plus grandes dimensions. Il suffit de connecter les bases entre elles par le système vis/écrou. Vous pouvez choisir de connecter les bases en positions A ou B



A Standard 5200mm



B Court 5140mm